



ASR Scorpions of SA

How to Identify a Scorpion

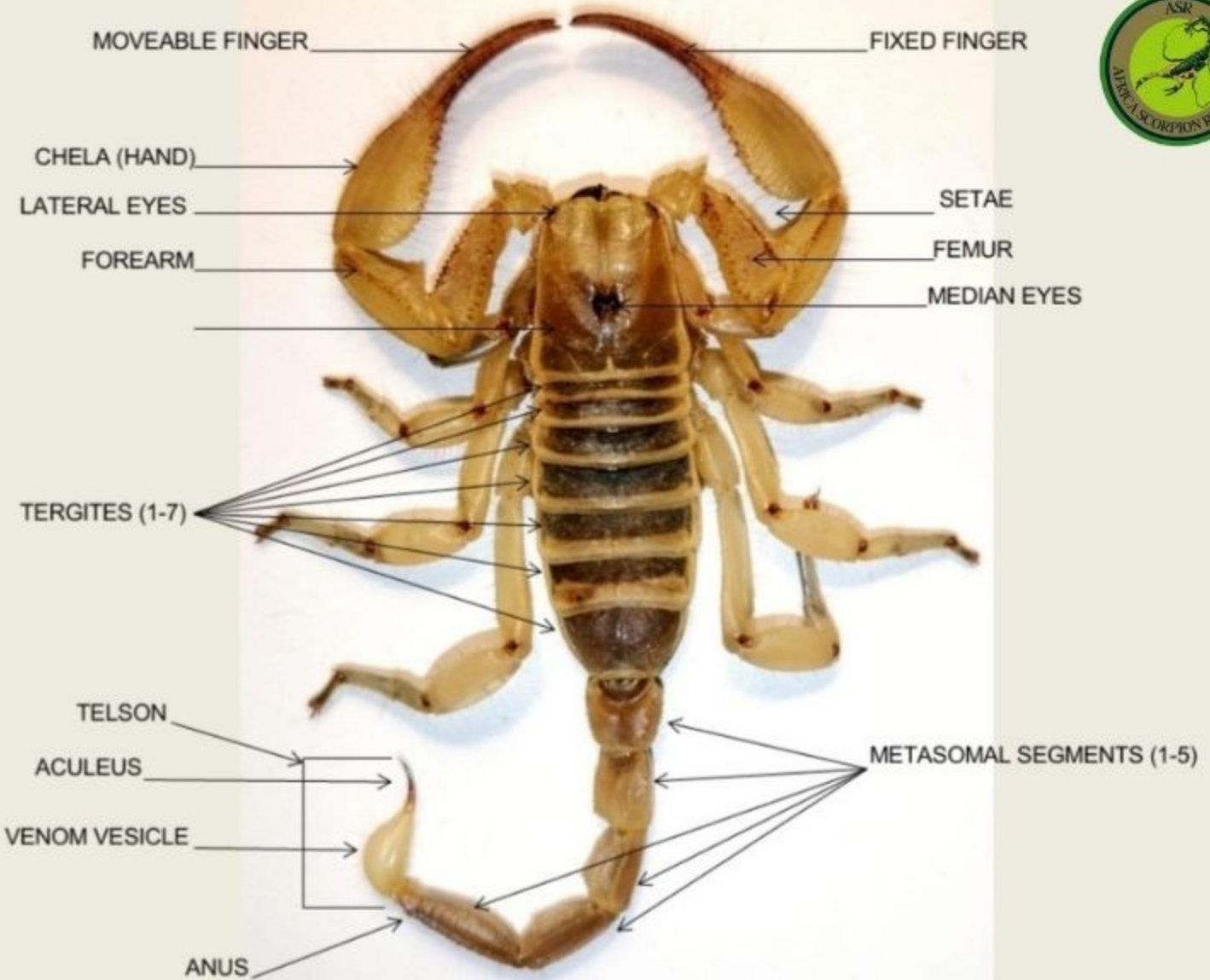


Scorpion anatomy

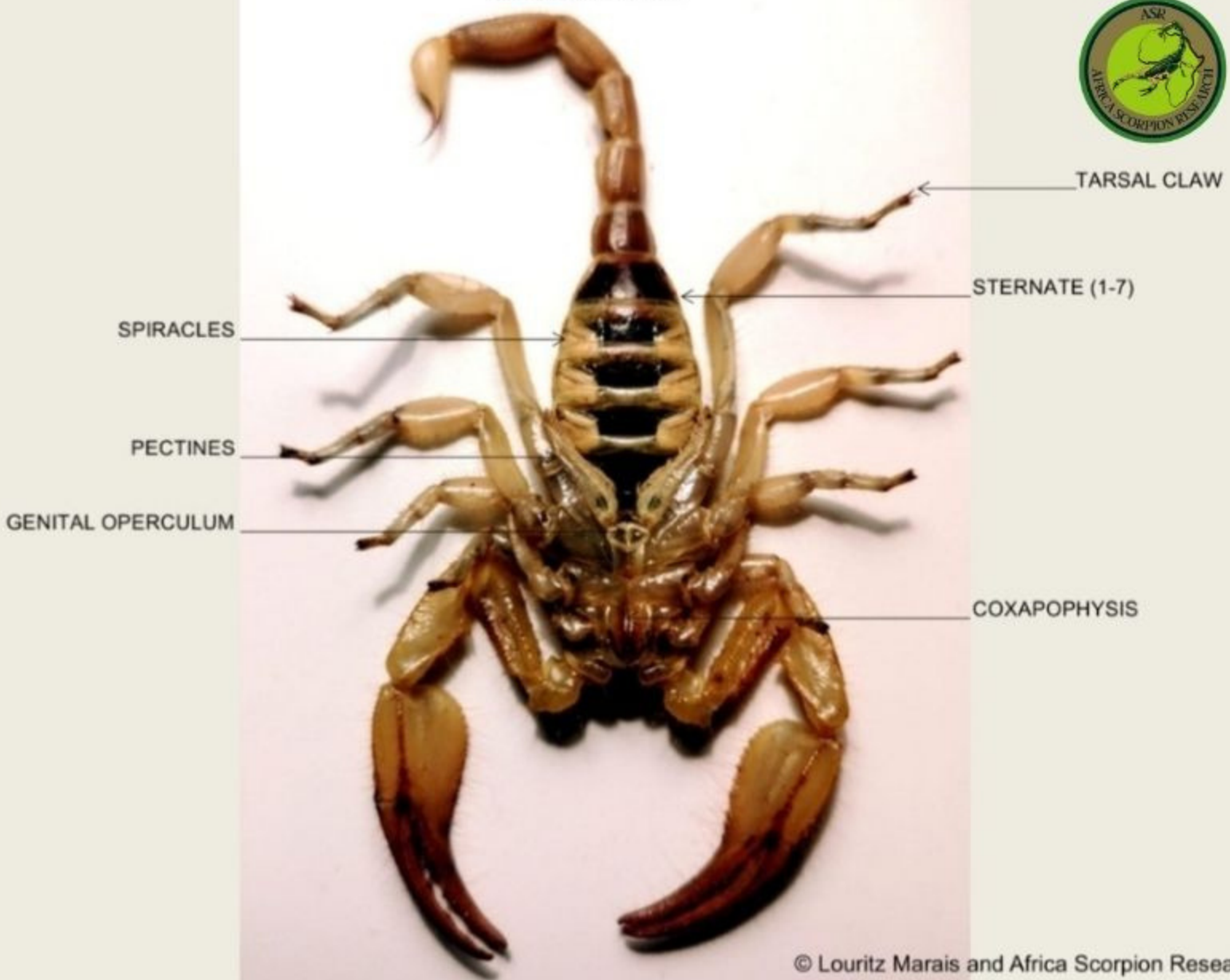
&

Identification

DORSAL VIEW



VENTRAL VIEW



When identifying a scorpion you look at two areas, namely the tail and the pinchers. This would allow you to narrow the scorpion down to genus level and if it is of medical importance

Let's take a closer look at the different genera and find your scorpion

Parabuthus (Thicktail Scorpions)



Most of the time a fairly large scorpion

- Very thick tail with a large telson
- Pinchers are small in comparison with the tail
- Can be seen moving around at night, except for *P. villosus*
- When moving its tail is in a curled up position
- It has very potent neurotoxic venom

This is a medically important genus and will require medical attention

Hottentotta



- A relatively sized scorpion around 65mm
- Has a thick tail in comparison with the small pinchers and relatively large telson
- Looking at the carapace, face area , it has ridges on top of the carapace looking like an X
- Has potent neurotoxic venom

This is a medically important genus and will require medical attention



Uroplectus (Lesser thicktails)



- Small scorpions around 30-45 mm
- It has small and weak pinchers in comparison with a relatively thick tail
- Has a round rectangular shape telson

It is not a medically important genus. Its sting is painful and basic first aid can be applied



Pseudolychas(Pygmy thicktails)



- Small scorpions around 40 mm in size
- It has small and weak pinchers in comparison with a relatively thick tail
- Has an oval shape telson

It is not a medically important genus. Its sting is painful and basic first aid can be applied



Opisthophthalmus (Burrowing scorpions)



- Species vary in size
- A scorpion with big strong Pinchers and a relatively big tail and telson
- When looking at the bottom moveable finger, you could see tooth like structures
- Females have round hands with short fingers and males have flat hands with elongated fingers

It is not a medically important genus. It's sting is painful and basic first aid can be applied

Opisthacanthus(Creeping scorpions)



- Species vary in size
- A scorpion with big strong Pinchers and medium sized tail and small telson
- It has large rectangular-box like shaped hands, setting it apart from the Cheloctonus genus
- When looking at the bottom moveable finger, you could see two rows of granules and males have a small tooth in the corner of the fingers
- Females have round hands with short fingers and males have flat hands with elongated fingers

It is not a medically important genus. It's sting is painful and basic first aid can be applied

Hadogenes (Rock scorpions)



- A very flat looking scorpion with big and strong pinchers almost . flat in appearance
- Long and elongated tail segments with tiny telson
- Males have long tails while females have short tails
- A sting will only itch for a couple of seconds

